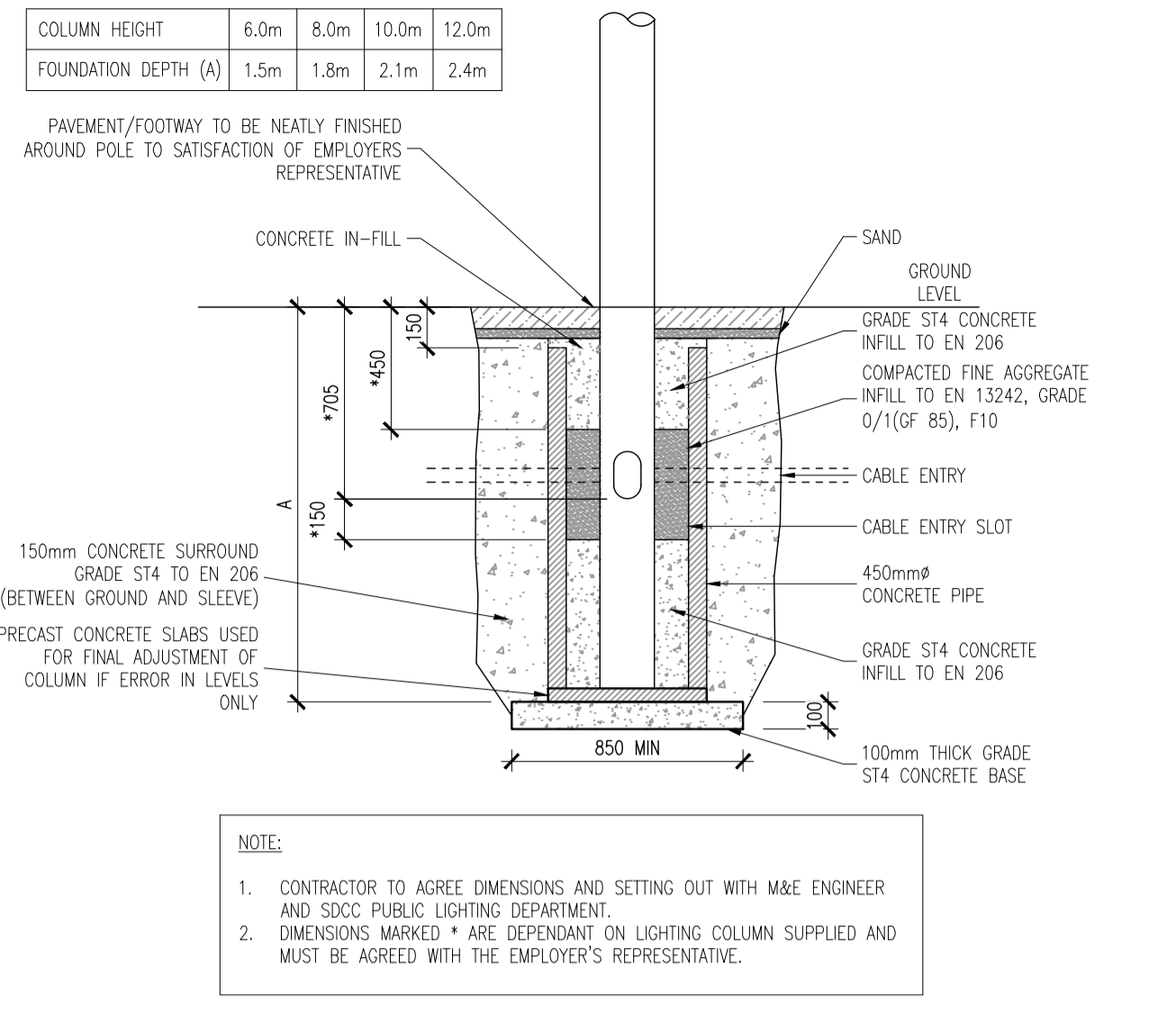


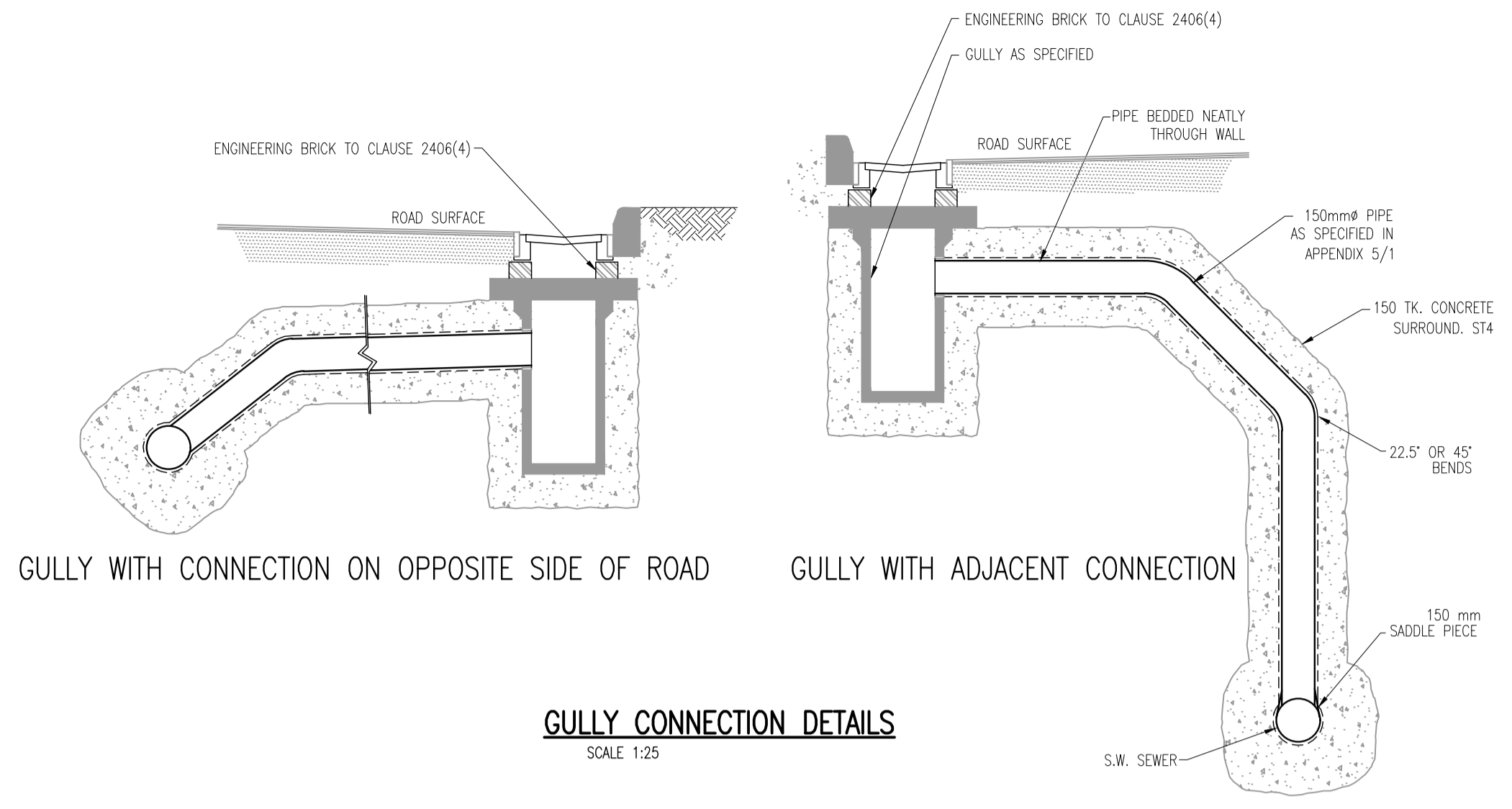
**TYPICAL MANHOLE COVER WITH MASTIC ASPHALT SURROUND (TO BE APPLIED AT ALL EXISTING & NEW MANHOLES) IN C/W**

**FIGURE 1A**



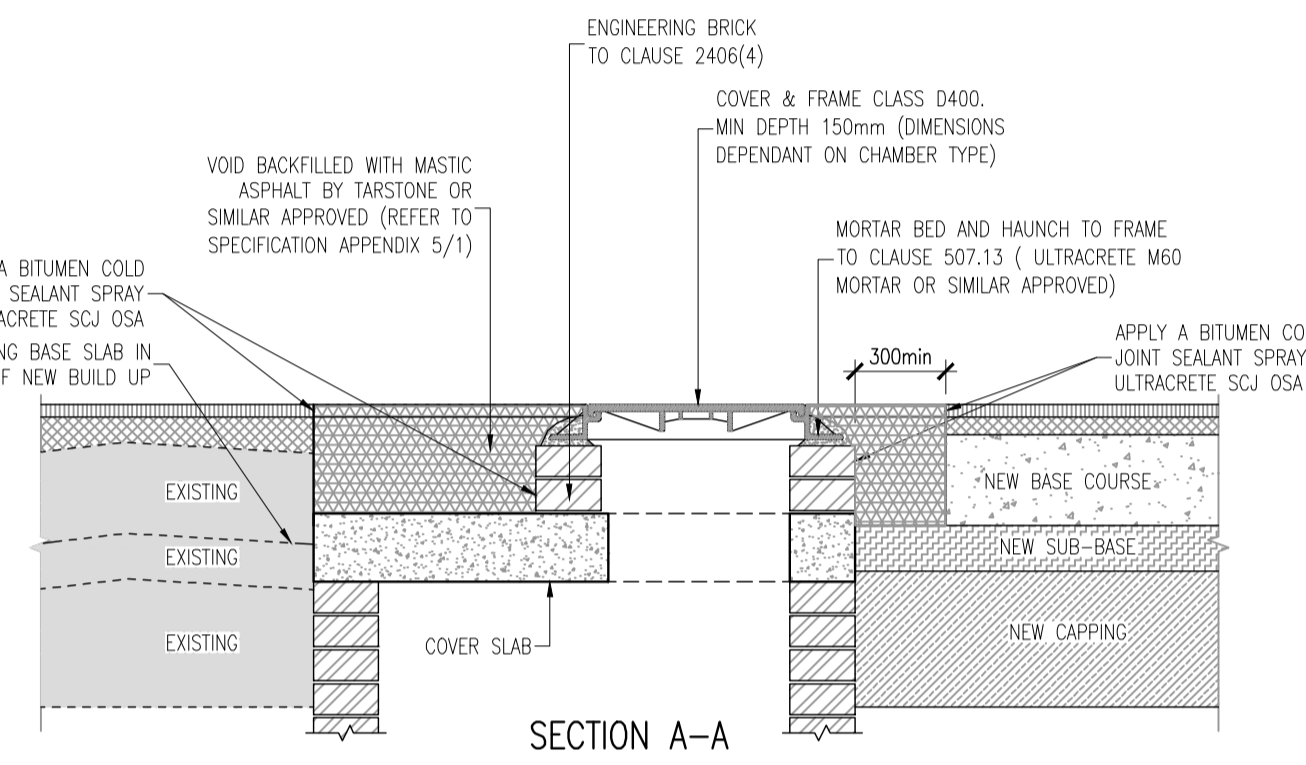
**TYPICAL LAMP STANDARD FOUNDATION SCALE 1:25**

**FIGURE 1B**

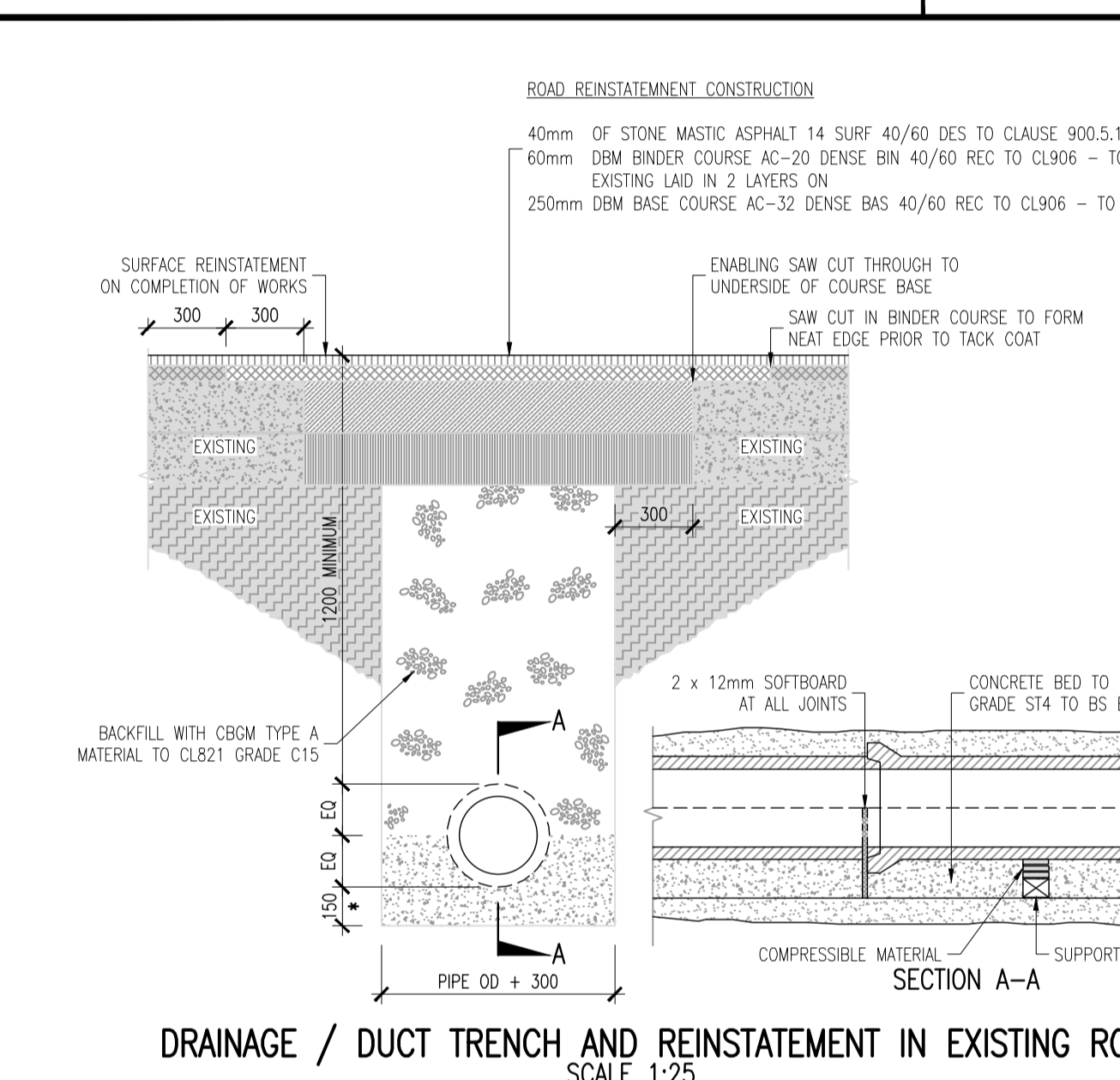


**GULLY CONNECTION DETAILS SCALE 1:25**

**FIGURE 1C**

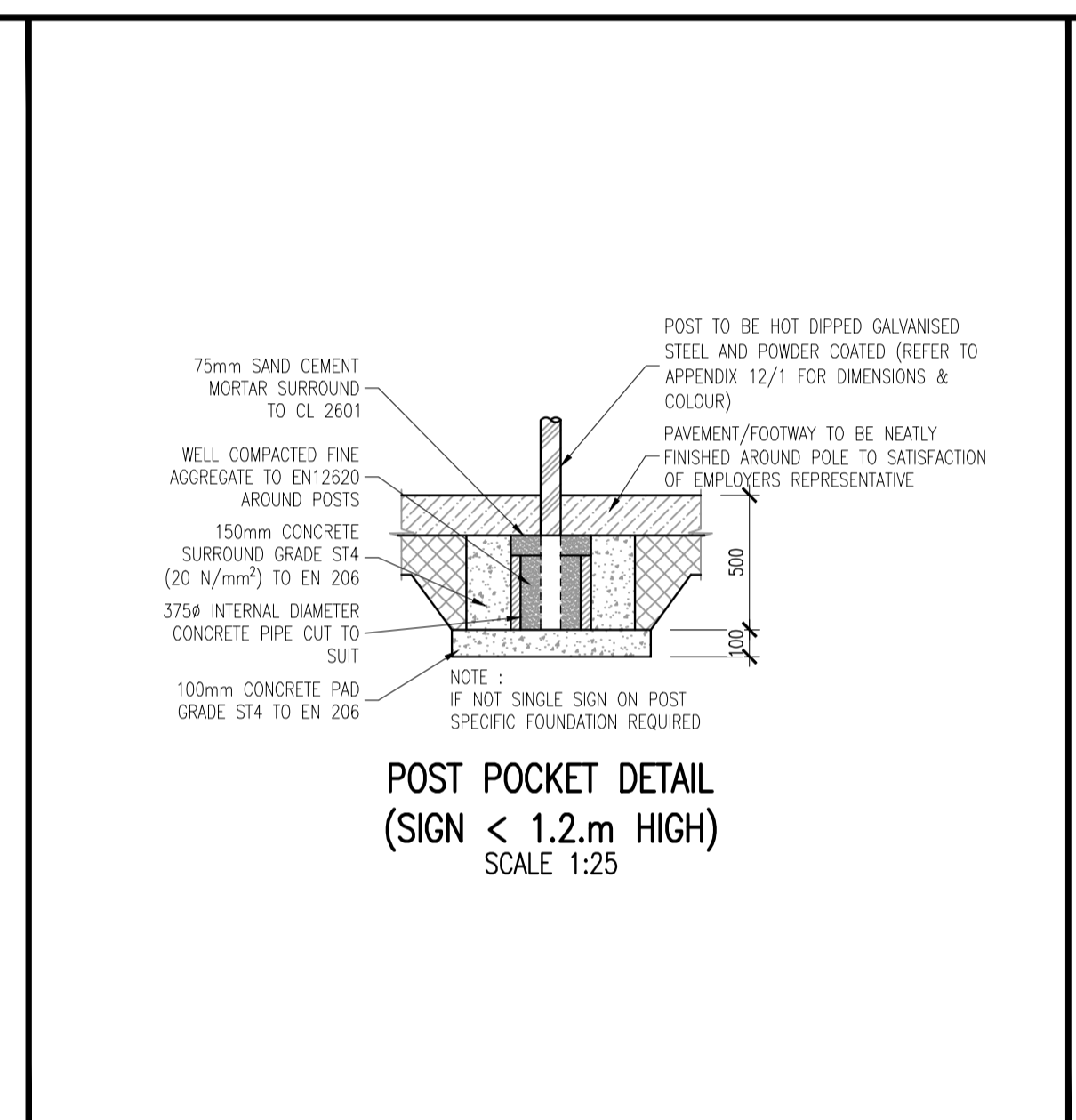


**TYPICAL MANHOLE COVER WITH MASTIC ASPHALT SURROUND (TO BE APPLIED AT ALL EXISTING & NEW MANHOLES) IN C/W**



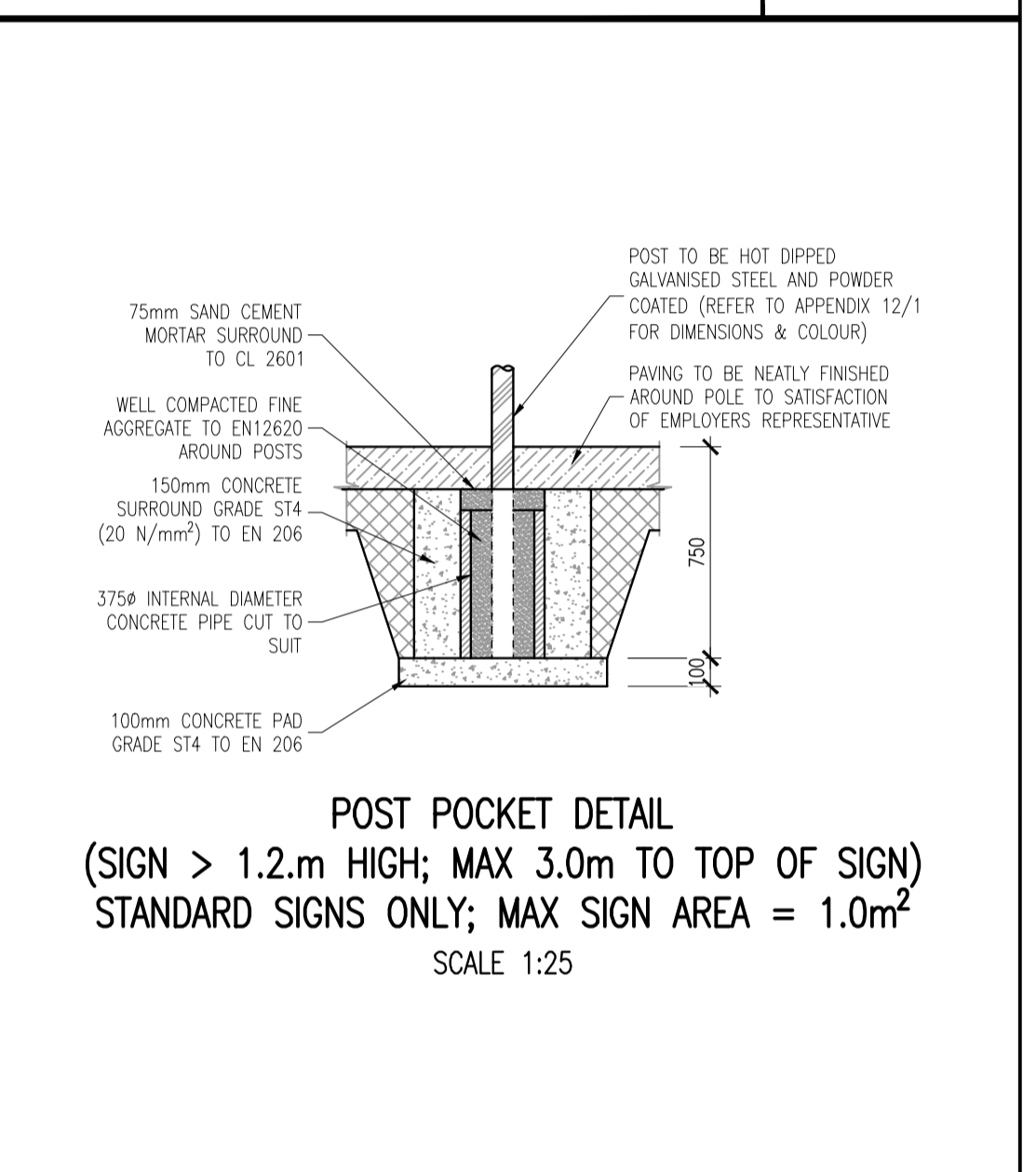
**DRAINAGE / DUCT TRENCH AND REINSTATEMENT IN EXISTING ROADS SCALE 1:25**

**FIGURE 1D**



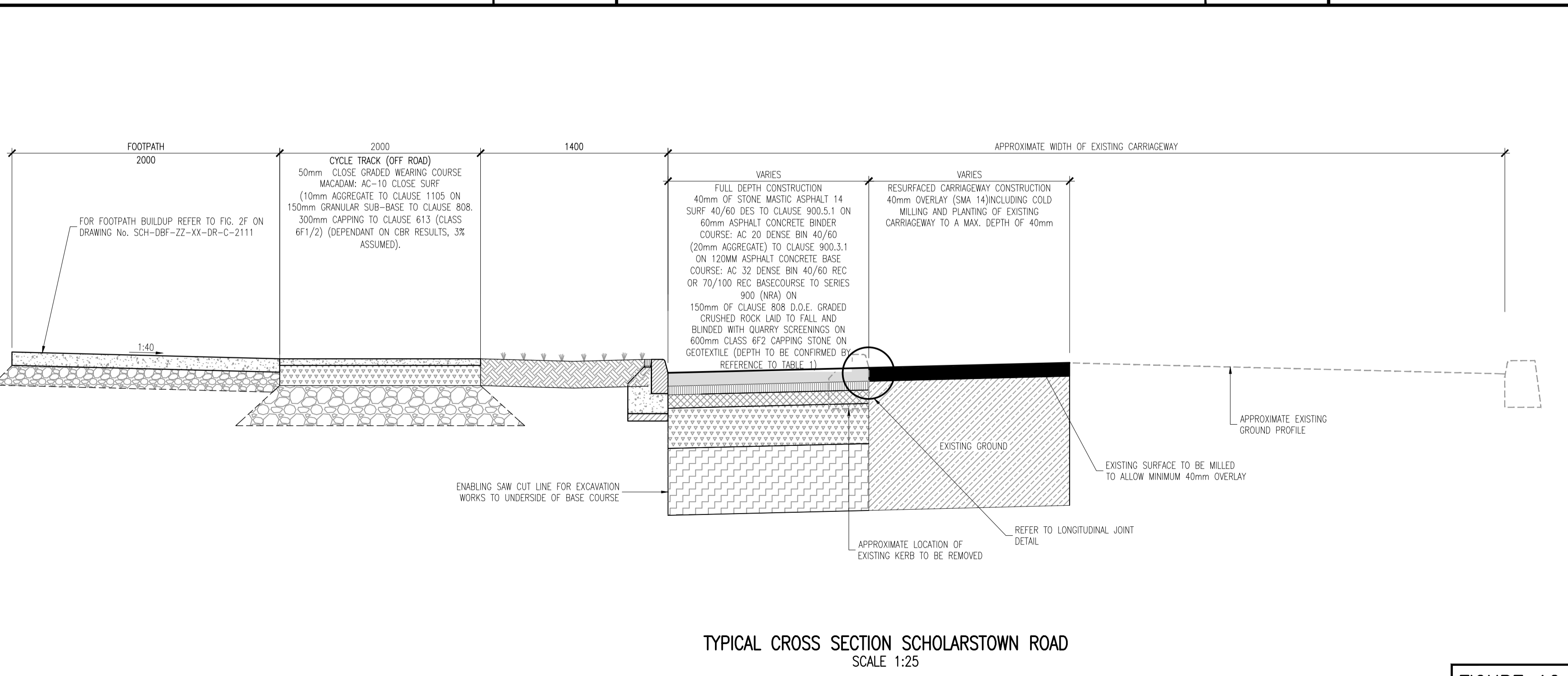
**POST POCKET DETAIL (SIGN < 1.2m HIGH) SCALE 1:25**

**FIGURE 1E**



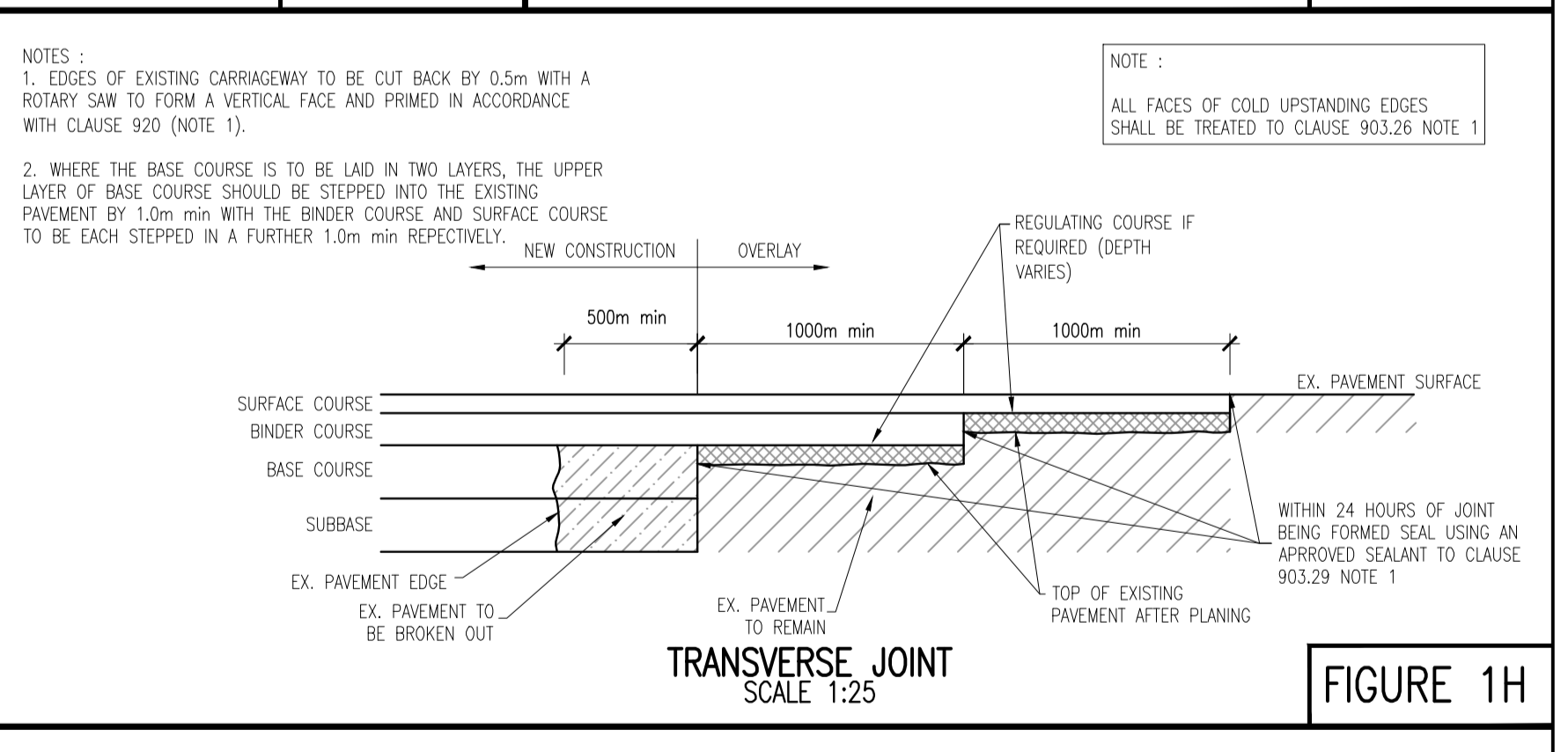
**POST POCKET DETAIL (SIGN > 1.2m HIGH; MAX 3.0m TO TOP OF SIGN) STANDARD SIGNS ONLY; MAX SIGN AREA = 1.0m² SCALE 1:25**

**FIGURE 1F**



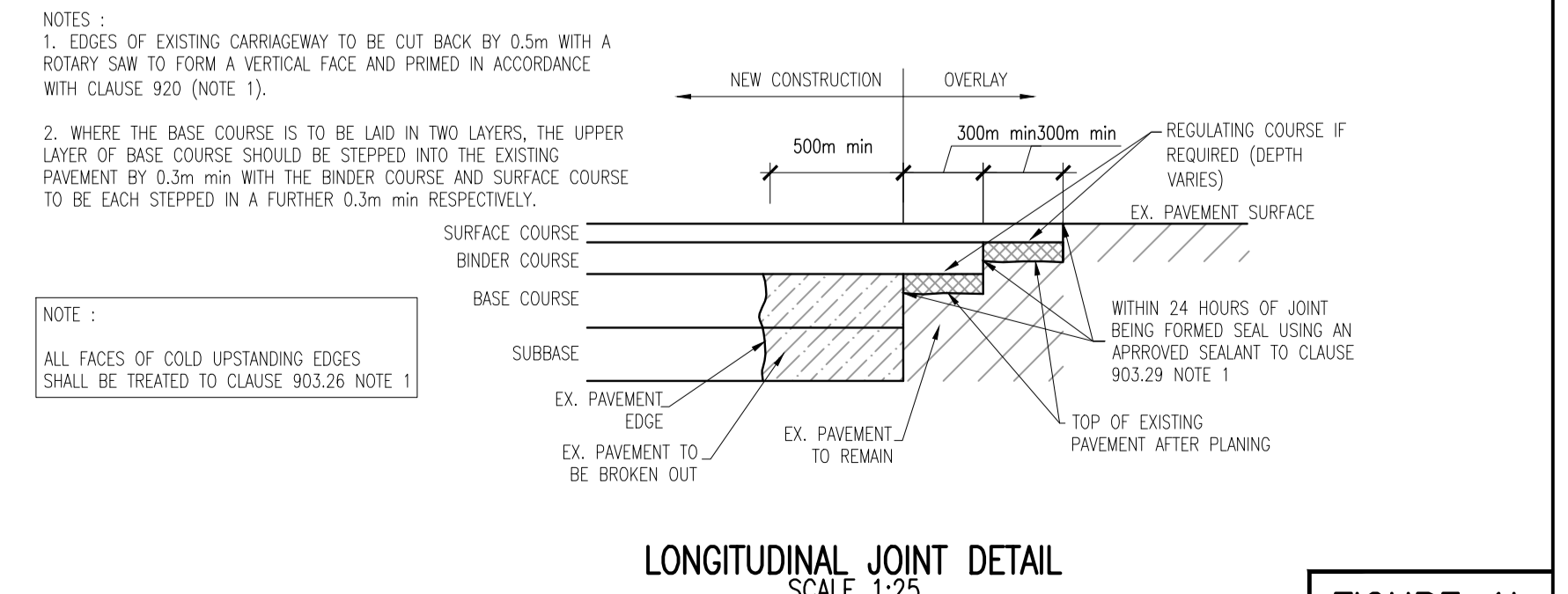
**TYPICAL CROSS SECTION SCHOLARSTOWN ROAD SCALE 1:25**

**FIGURE 1G**



**TRANSVERSE JOINT SCALE 1:25**

**FIGURE 1H**



**LONGITUDINAL JOINT DETAIL SCALE 1:25**

**FIGURE 1I**

- GENERAL NOTES:
1. THE SPECIFICATION REFERRED TO IN THE CONTRACT SHALL BE THE SPECIFICATION FOR ROAD WORKS IN THE TII PUBLICATIONS.
  2. ALL WORKS SHALL BE CONSTRUCTED IN ACCORDANCE WITH THE WORKS REQUIREMENTS.
  3. ALL DIMENSIONS IN METRES UNLESS SPECIFIED OTHERWISE.
  4. CO-DIMENSIONS ARE TO BRIS TRANSVERSE MERCATOR.
  5. ALL LEVELS ARE TO ORDNANCE DATUM (MALN HEAD).
  6. ALL TEMPORARY TRAFFIC MANAGEMENT SHALL COMPLY FULLY WITH THE WORKS REQUIREMENTS - REFER TO APP 1/17.
  7. THE CONTRACTOR MUST LIAISE DIRECTLY WITH SDOCC ROADS DEPARTMENT AS DIRECTED IN THE WORKS REQUIREMENTS.
  8. ALL VEHICULAR, PEDESTRIAN & CYCLE ROUTES WITHIN AND SURROUNDING THE WORKS EXTENTS MUST BE MAINTAINED THROUGHOUT THE WORKS IN ACCORDANCE WITH THE CONTRACTORS APPROVED TEMPORARY TRAFFIC & OPERATIONS MANAGEMENT PLAN.
  9. ALL PERMANENT TRAFFIC MANAGEMENT TO BE CONCEALED/REMOVED OR INCORPORATED INTO THE CONTRACTORS TEMPORARY TRAFFIC MANAGEMENT PLAN THROUGHOUT WORKS AND TRANSFERRED ONLY WHEN AGREED WITH SDOCC TRAFFIC DEPARTMENT.
  10. ALL AGGREGATES PROPOSED FOR USE ON THIS SCHEME SHALL MEET FULLY THE REQUIREMENTS OF THE CONTRACT SPECIFICATION AND IN ADDITION THE REQUIREMENTS STATED IN STANDARD RECOMMENDATION S.R. 21/2014 GUIDANCE ON THE USE OF U.S. EN 13242:2002 W4/2007 - AGGREGATES FOR UNBOUND AND HYDRAULICALLY BOUND MATERIALS FOR USE IN CIVIL ENGINEERING WORK AND ROAD CONSTRUCTION. FURTHER DETAIL IS PROVIDED IN ADDITIONAL CLAUSE 1444R OF THE CONTRACT SPECIFICATION.

DRAWING SPECIFIC NOTES:  
1. ALL REFERENCES TO SERIES 900 OF NRA SPECIFICATION, REFER TO SERIES 900 DATED DECEMBER 2014

LIST OF NRA ROAD CONSTRUCTION DETAILS BROUGHT INTO THE CONTRACT

RCD 300/1	TIMBER POST & RAIL FENCE - TYPES A & B
RCD 300/11	TIMBER SINGLE FIELD GATE
RCD 400/1	PEDESTRIAN GUARD RAIL
RCD 500/1	CHAMBER TYPES
RCD 500/2	CHAMBER TYPE A (BLOCK OR INSITU CONCRETE)
RCD 500/3	CHAMBER TYPE B (BLOCK OR INSITU CONCRETE)
RCD 500/4	CHAMBER TYPE C (PRECAST CONCRETE MANHOLE)
RCD 500/5	CHAMBER TYPE D (PRECAST CONCRETE MANHOLE)
RCD 500/6	CHAMBER TYPE E (PRECAST CONCRETE MANHOLE)
RCD 500/7	CHAMBER TYPE F (TYPICAL HINGED GRATING DETAIL)
RCD 500/8	VERTICAL BACKDROP MANHOLES
RCD 500/9	CHAMBER TYPE F (PRECAST CATCHPIT)
RCD 500/10	PRECAST CONCRETE GULLY
RCD 500/11	INSITU CONCRETE & BLOCKWORK GULLIES
RCD 500/12	GULLY GRATING
RCD 500/13	CHAMBER FITTINGS - LADDER HAND HOLD AND SAFETY CHAIN
RCD 500/14	TYPICAL CHAMBER DETAILS
RCD 500/20	FILTER DRAINS - TRENCH & BEDDING DETAILS
RCD 500/21	SURFACE WATER DRAINS - TRENCH & BEDDING DETAILS
RCD 500/24	DIAGRAMMATIC LAYOUT AT HEADWALLS
RCD 500/51	SELF CLEARING INLET GRID DETAIL
RCD 500/52	OUTLET GRID DETAIL
RCD 500/53	CA OF FORMED HEADWALLS (INTERCEPTOR DRAINS)
RCD 500/60	TRANSVERSE DUCTS
RCD 500/61	TRENCH CROSS-SECTIONS UNDER TRAFFICKED AREAS
RCD 500/62	TRENCH CROSS-SECTIONS UNDER NON-TRAFFICKED AREAS
RCD 500/63	DUCT CROSSING TYPES
RCD 500/64	FOOTWAY/VERGE DRAW PIT
RCD 500/65	CARRIAGEWAY DRAW PIT - TYPE A
RCD 600/1	TRANSITION AREA BETWEEN CUT AND FILL
RCD 600/2	INTERCEPTOR DITCHES
RCD 700/2	KERBED PAVEMENT EDGE DETAIL
RCD 700/3	TRANSVERSE JOINT BETWEEN NEW CONSTRUCTION AND EXISTING ROAD
RCD 700/4	LONGITUDINAL JOINT BETWEEN NEW CONSTRUCTION AND EXISTING ROAD
RCD 700/5	TRENCH REINSTATEMENT
RCD 700/6	ACCESS ROAD / SERVICE ROAD
RCD 1000/2	EXPANSION JOINTS
RCD 1000/3	CONTRACTION JOINTS
RCD 1000/6	TRANSITION FROM RIGID TO FLEXIBLE CONSTRUCTION
RCD 1100/2	INSITU CONCRETE KERB
RCD 1100/3	DROPPED KERB RAMP
RCD 1100/4	BITUMINOUS FOOTWAY
RCD 1100/5	CONCRETE FOOTWAY
RCD 1100/7	NOISING DETAIL

**Table 1**

CBR (%)	Depth of Capping (mm)
2	600
3	350
4	300
5	250
8	200

P01	04-11-19	ISSUED FOR PLANNING	JIB	BK
rev	date	description	by	chkd.
		A - Approved		
		B - Approved with comments		
		C - Do not use		

subtality: S2 - INFORMATION issue purpose: PLANNING

**DBFL Consulting Engineers**  
Civil, Structural & Transportation Engineering  
www.dbfl.ie

DUBLIN OFFICE: Ormond House, Upper Ormond Quay, Dublin 7, Ireland  
PHONE: +353 1 400 4000

WATERFORD OFFICE: Unit 2, The Chandlers, 1-2 Canal Street, Waterford, Ireland  
PHONE: +353 51 309 500

project ref.: RESIDENTIAL DEVELOPMENT SCHOLARSTOWN

drawing title: TYPICAL CONSTRUCTION DETAILS SHEET 1

architect: JOHN FLEMING ARCHITECTS

designed by	author	scale	sheet size
SB	JIB	AS NOTED	A1
drawing no.		revision	
SCH-DBF-ZZ-XX-DR-C-2110		P01	